

NORVIK 5

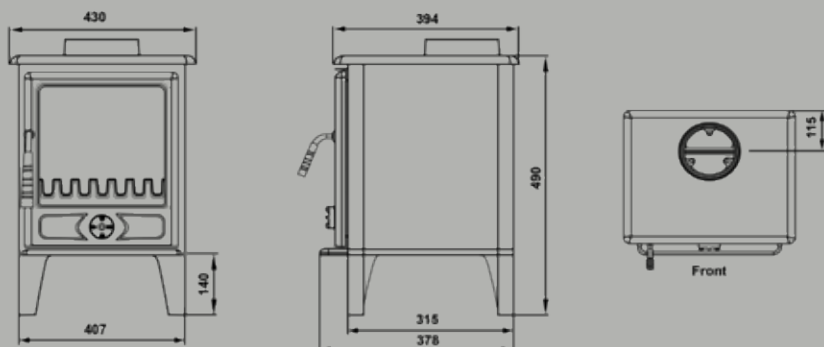


The Norvik 5 is a sturdy cast-iron stove with a heat output up to 5kW and an efficiency of 80%. A multi-fuel grate allows for the use of smokeless fuels, wood and peat.

The Norvik 5 also has the advantage of a **Tertiary Air** inlet which mixes pre-heated air with the exhaust gas-

es, allowing the exhaust gases to re-ignite producing a cleaner and more efficient stove.

The mantel shelf shown is the Keswick in solid oak (also available in pine) and the stove is seen standing on a honed black granite hearth with a slate inglenook panel to the rear.



Key Facts:

Nominal Heat Output	Up to 5kW
Construction	Cast-iron
Weight	80Kgs
Flue Outlet	Top (125mm) 5"
Efficiency	80%
DEFRA Approved	Yes
Tertiary Air	Yes

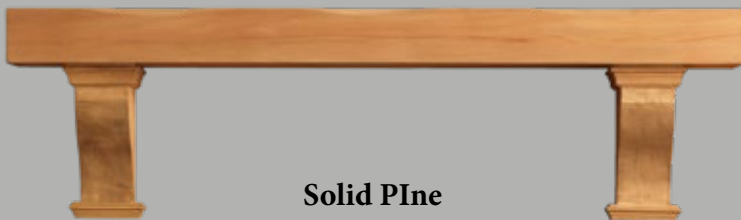
KESWICK MANTELS

The **Keswick** is a shelf with corbels, available in solid oak or solid pine. This shelf is ideally suited as a feature in any room and looks quite exquisite above the inglenook of a fireplace as shown overleaf.

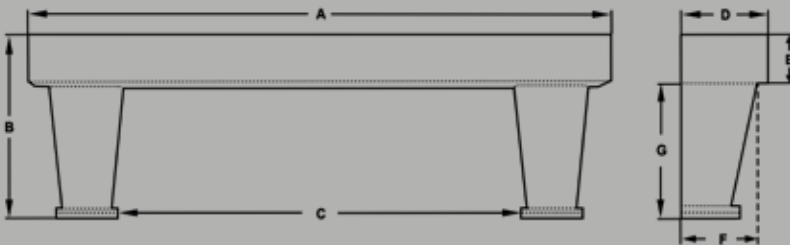
The Keswick has a light stained finish but may be available without a finish upon request and has a choice of two shelf lengths, 1200mm (48") and 1350mm (53").



Solid Oak



Solid Pine



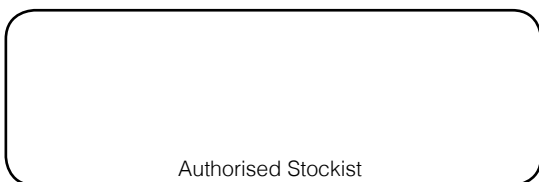
Keswick 1350

A	1350mm (53")
B	380mm
C	910mm
D	200mm
E	100mm
F	150mm
G	280mm

Keswick 1200

A	1200mm (48")
B	380mm
C	895mm
D	200mm
E	100mm
F	150mm
G	280mm

Distributed in the UK and Ireland by



Authorised Stockist

INGLENOOK PANELS

Inglenook Panels are decorative fire resistant boards manufactured using natural riven stone pieces attached to the fascia.

Oyster Marble



Grey Slate

These panels are available in two different materials, grey slate or oyster marble.

Three panels (one large for the rear and two small for the sides) make up a standard inglenook chamber but alternatively one large panel can be fitted to the rear only as shown overleaf.

Small Panels

940mm x 406mm (37" x 16")

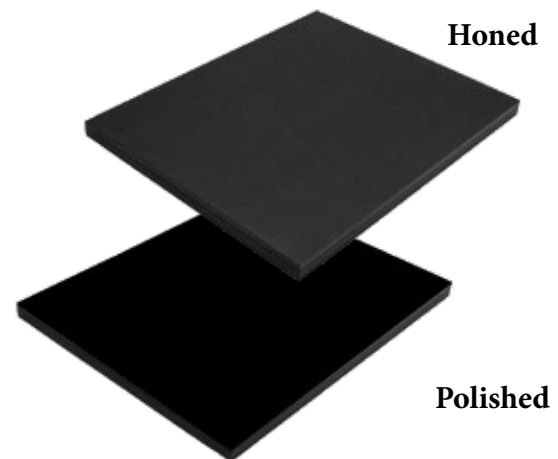
Large Panels

940mm x 940mm (37" x 37")

GRANITE HEARTHES

Black granite is the ideal material to use for a hearth as it is quite difficult to scratch or chip and it is easy to maintain.

The granite hearth shown overleaf is boxed flush measuring 900mm x 750mm x 50mm and is available as seen in a honed (rather dull) finish or a highly polished (shiny black) finish.



Honed

Polished